



Stage Decks

Construction:

- 6005-T5 EXTRUDED Aluminum Frame & Corners
- 1" Thick 9-Ply Marine Grade Plywood
- Grade 5 Zinc Plated Bolts
- #10 Zinc Plated Bolts

Features:

- Certified live weight load of 200 lbs per square foot
- Nylock nuts eliminate vibration and noise interference
- Dual Lock™ locking system activated from top or bottom of decks
- Center Support Brace

Weight:

- Approx. 129-137 Pounds, Depending on Surface (4' x 8' Stage Deck)

Surface Options:

Standard surface options include: Non-Skid Quad, Smooth Haircell Polyvinyl, Pepper Grey Carpet, Black Carpet, Clear Plexi, Milk Plexi or Unfinished Plywood. The Quad or Poly surfaces can be treated to become weather resistant. Unfinished plywood can be finished with stain, clear polyurethane or flame retardant black paint. Custom surfaces include: Plyron, Diagonal Punch Aluminum Plank, Tongue & Groove and custom carpet. All surface options with the exception of the grated aluminum or Diagonal Punch Aluminum Plank are easily removable and can be interchanged to provide versatility to our decks.

Custom surfaces available.



Milk Plexi Stage Deck



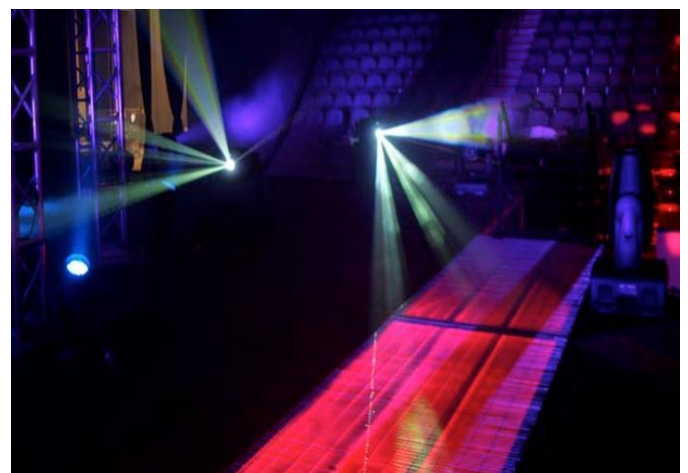
Male Dual Lock



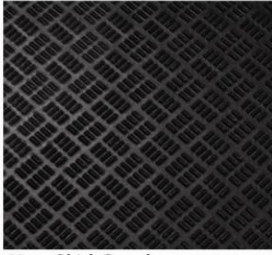
Female Dual Lock



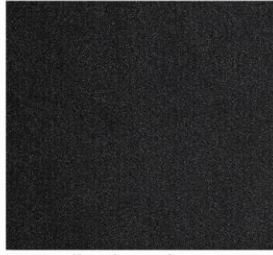
Center Support Brace



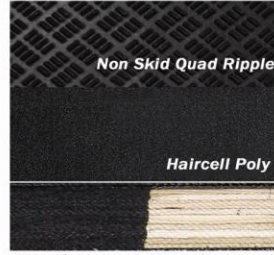
Grated Aluminum Stage



Non Skid Quad
1" thick 9-ply, marine grade, Douglas Fir plywood with a 0.050 black, Non-Skid Quad Ripple Polypropylene applied to the top surface and a 0.020 Polypropylene applied to the bottom/ COF Value: 0.83 grip surface.



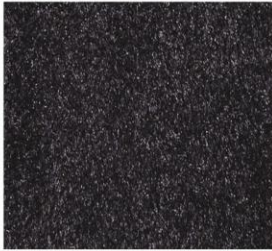
Haircell Polyvinyl
1" thick, 9-ply, marine grade, Douglas Fir plywood with a 0.050 smooth black Level Haircell Polyvinylpropylene applied to the top surface and a 0.020 Polypropylene applied to the bottom/COF Value: 0.71 grip surface.



Weather Resistant Option
A two-step CP10 primer/ sealer aggregate is applied to the edges of our poly or quad surfaces prior to positioning in the aluminum frame.



Grey Carpet
3/4" thick 11-Ply marine grade plywood with a 26 oz. pepper grey loop carpet adhered to plywood surface.



Black Carpet
3/4" thick 11-Ply marine grade plywood with a 30 oz. jet black pile carpet adhered to plywood surface.



Unfinished Plywood
1" thick 9-ply marine grade plywood can be sold unfinished or finished with stain or clear polyurethane.



Plywood with Black Flame Retardant Paint
1" thick 9-ply marine grade plywood can be sold unfinished or finished with stain or clear polyurethane.



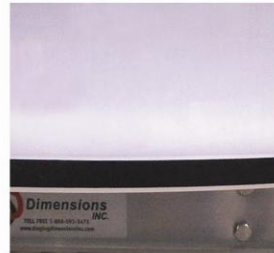
Grated Aluminum
1" x 3/16" mill finish swaged aluminum grating is welded to aluminum deck frames allowing for up-lighting, fog, haze and other special effects.



Diagonal Punch Aluminum Planks
6" Planks are welded to aluminum deck frames providing an impervious, weather-proof surface for permanent outdoor installations.



"Clear" Plexi
1" thick clear acrylic provides an unobstructed surface for up-lighting stages & runways. A combination of 3/4" + 1/4" thick surfaces can also be used to allow inexpensive replacement of the 1/4" surface so that decks remain in like new condition.



"Milk" Plexi
1" thick Natural Polypropylene (Milk) provides a diffused surface for up-lighting. A combination of 3/4" + 1/4" thick surfaces can also be used to allow inexpensive replacement of the 1/4" surface so that decks remain in like new condition.



Tempered Plyron
1" thick tempered hardboard laminated to a Douglas Fir/Hemlock core with 1 step layup, waterproof glue bond and meets APA PS 1-07 specifications.



Tongue & Groove-Natural
3/8" x 3" hardwood floor planks are glued to a 3/4" thick 11-Ply marine grade plywood base.



Tongue & Groove-Gunstock
3/8" x 3" hardwood floor planks are glued to a 3/4" thick 11-Ply marine grade plywood base.



Tongue & Groove-Cherry
3/8" x 3" hardwood floor planks are glued to a 3/4" thick 11-Ply marine grade plywood base.



Tongue & Groove-Woodstock
3/8" x 3" hardwood floor planks are glued to a 3/4" thick 11-Ply marine grade plywood base.



Tongue & Groove-Butterscotch
3/8" x 3" hardwood floor planks are glued to a 3/4" thick 11-Ply marine grade plywood base.



Tongue & Groove-Harvest
3/8" x 3" hardwood floor planks are glued to a 3/4" thick 11-Ply marine grade plywood base.



Custom Carpet #1



Custom Carpet #2